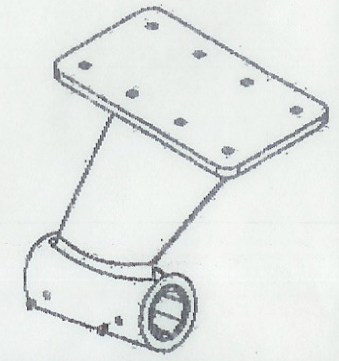
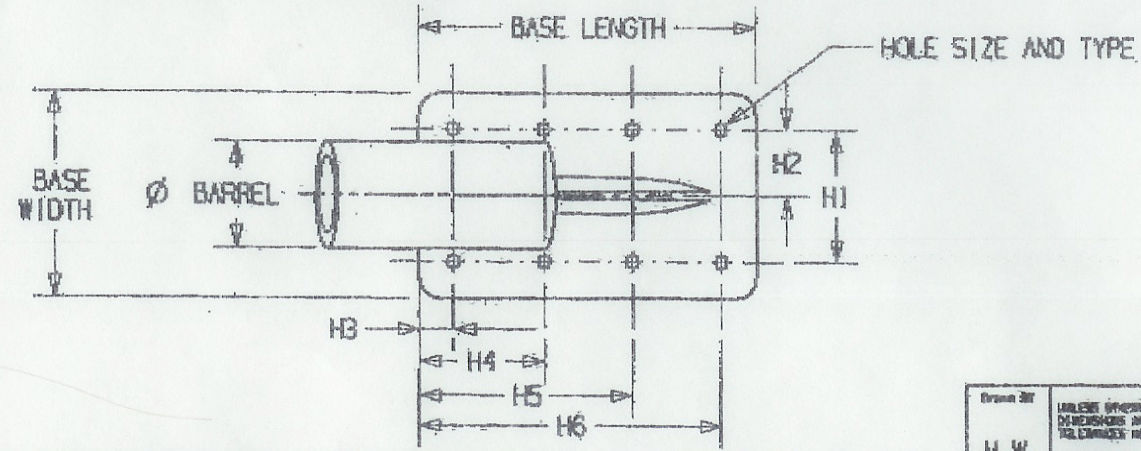


Mount Holes
 No. of holes 4
 Dia. .390"
 Type C/S

Hole Location
 H1 2.25" H3 .6875"
 H2 (half of H1) H4 4.80
 H5 XXX
 (if applicable) H6 XXX

Shaft Dia. 1.0"
 Shaft Angle 15.5 deg
 Drop 6.12"
 Backsweep 1.25"
 Barrel Length 4.0"
 Base Length 5.5"
 Base Width 3.5"
 Other-



Part No. MHST 518
 Casting No. CAL--29
 Pattern No. 5518
 Other CUSTOMER -CAL 29

Drawn By N.W.	UNLESS OTHERWISE SPECIFIED DIMENSIONS ARE IN INCHES TOLERANCES ARE:	MARINE HARDWARE INC. REDMOND WA 98073 PHONE (425) 882-9851 FAX (425) 882-1232	
Checked By	ANGLES : .25" X.XX : .03 X.XXX : .010	STRUT WITH BACKSWEEP, WORKSHEET	
Approved By	FINISH 125	QTY 1	Part # 1
	DO NOT SCALE	70 MAG BRONZE	DATE 5/18/00

FOR IN - HOUSE USE ONLY - DO NOT DUPLICATE WITHOUT WRITTEN AUTHORIZATION