



350

028
310
CAL
2-34

controls, 4" foam cushions with deluxe fabric, deep pile carpet, curtains, real teak interior trim, pressurized shower, double life lines with gate, electric and manual bilge pump, four Barent winches, emergency steering, mid-cabin hatch, and on and on and on.

Quality materials down to the last piece of trim.

Like all Cal boats, the Cal 2-34 is constructed of hand laid-up fiberglass with a high percentage of woven roving for a stronger hull. The large self-bailing cockpit is molded integrally with the cabin top for extra strength. Maintenance is virtually eliminated because the colors and nonskid surfaces are molded in. And any color gel coats are available at no extra charge.

Cal 2-34. Two boats in



one.

Not only is the Cal 2-34 unusually spacious (like 40 feet of boat built in 34), but she's also fast.

As a cruiser she's comfortable and luxurious. Lots of room to move around in during weekend sails or over those long hauls. The Lapworth design features a counterbalanced spade rudder which gives positive tracking and perfect control under all points of sail. A masthead sail plan gives you a wide choice of sails, making the Cal 2-34 easily handled by a couple.

And she's a performer. With a long waterline, light displacement hull and good beam for stiffness in a blow.

Lots of elbow room.

Below deck, the Cal 2-34 is roomy and comfortable. Two totally separated cabins give complete privacy for 4 to 6 people. With full headroom throughout. The forward cabin has a double berth, spacious hanging locker and a built-in dresser. The head is separate from either cabin and contains a mirrored dressing table and a hanging locker. There's plenty of stowage space for sails and other gear. There are two quarter berths aft and the galley is full sized.

Standard features that others list as extras.

The Cal 2-34 comes equipped with a long list of features that other manufacturers would charge you for. A 24 HP diesel, wheel with brake and





Specifications.

This comfortable cruising boat that also delivers top performance has been designed from the bottom up with lots of room and built-in comfort for four to six people. Four large windows and four opening ports fill the main cabin with air and light.

The interior cabin finish combines both luxury and utility. All bulkheads, cabinets, doors, steps and interior trim are either meticulously-picked Burmese teak or easy-to-clean formica. All cushions are 4" thick and covered with a long-lasting, color-coordinated fabric. The inner hull surfaces are covered with a foam-backed fabric for beauty, insulation and noise absorption. All berths are 6'4" long.

Hull: One-piece reinforced fiberglass lamination. Layer upon layer of woven roving is cut, laid down and resin is brushed and squeegeed by experienced craftsmen. Additional laminate is placed in the keel support area. Internal lead ballast is bonded in place. Colors and stripes are molded in.

Deck: Hand laid-up, molded fiberglass construction with plywood core for strength, insulation and noise dampening. Deck is bonded to the hull for maximum strength. Large sail hatch forward of the mast, mid-cabin hatch, and companionway hatch. Colors and non-skid surfaces are molded in.

Cockpit: Self-bailing and fully scuppered, it offers maximum space and comfort. Cockpit seats afford comfortable back and leg support and good visibility. Winch islands located aft of the helmsman for efficient sail handling by the crew. Two underseat storage compartments with hinged fiberglass covers.

Rigging: High-aspect ratio, easy-to-handle masthead rig with large foretriangle for a wide choice of headsails. Aluminum mast and

boom. All standing rigging including turnbuckles, fittings and cleats is stainless steel, anodized aluminum or bronze. Swaged fittings and Everdur chain plates. Running rigging is dacron and stainless. Barient halyard and genoa winches.

Ventilation and ports: Four fixed, framed windows plus four opening ports.

Galley: Stainless steel sink, formica counter and 50 lb. icebox. Four storage drawers and a front-opening cupboard. Approximately 26 gallon water tank. Dinette seats 6 to 8 comfortably.

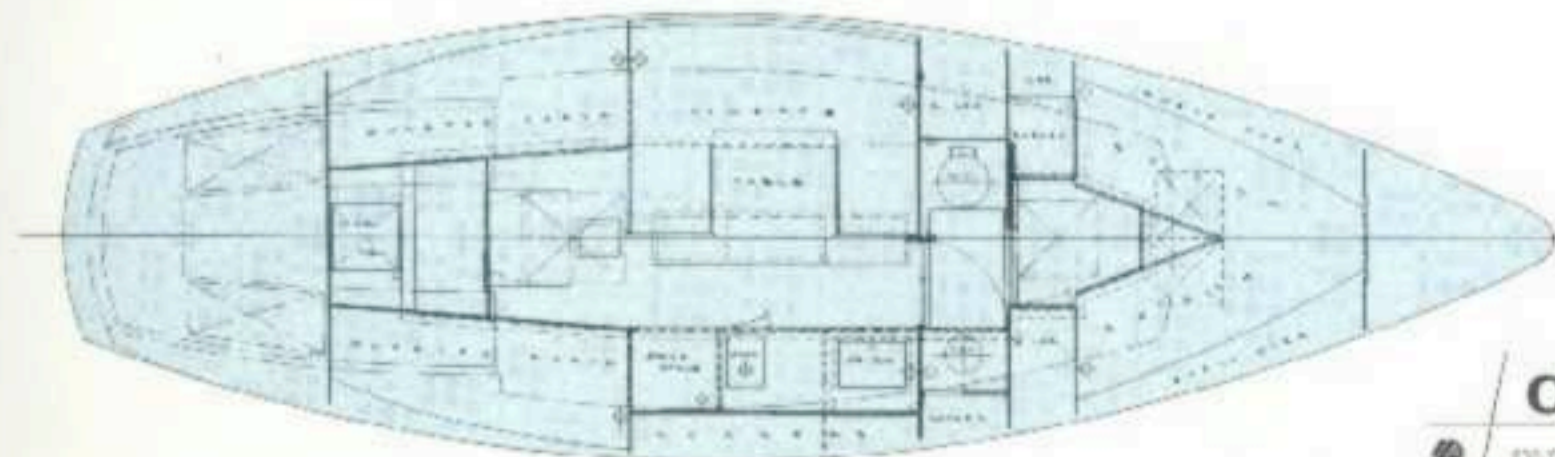
Head: Very large area, double doored for complete privacy. Contains a mirrored dressing table, lavatory, pressurized shower and generous hanging locker. 2 opening ports and an overhead hatch.

Electrical: 12 volt battery with 40 amp alternator. Fused instrument panel. Lighting in forward compartment, head, galley, dinette, International running lights. Shore power.

Auxiliary power: 24 HP diesel. 7.1 knots cruising speed. Complete controls and instruments. Approximately 25 gallon fuel tank with shut-off valve.

The Cal 2-34 is also available with gas power, tiller steering and fewer features at a lower price.

Dimensions			
L.O.A.	33' 3"	Draft	5'
L.W.L.	26'	Sail Area	515 sq. ft.
Beam	10'	Disp.	9500 lb.
		Ballast	3750 lb.



All specifications and prices subject to change without notice.

©1976 HANSON YACHTS

CAL-BOATS

A HANSON YACHTS COMPANY
 830 YOD-CR ST. COSTA MESA, CALIF. 92626
 BOUNDARY RD., MARLBOROUGH, NEW JERSEY 07746

20 25 27 28 34 35 36

The better boat.